


See assembly instructions on page 2/2

MATERIALS

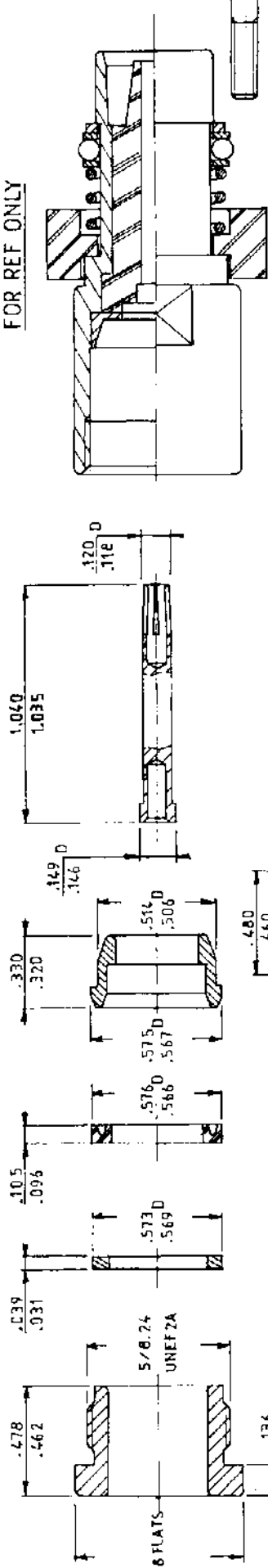
- Contact: metallic parts: copper alloy gold over nickel underplate
- Insulator: teflon
- Gasket and o.ring: silicone rubber
- Assembly plate: aluminium alloy anodized
- Screws and spring: stainless steel

Dessiné le 15.10.85 par MARIE			 RADIALL® département SOGIE 101, rue Philibert Hoffmann Zone Industrielle Ouest 93116 ROSNY-SOUS-BOIS Téléphone : 854 80 40
PEN			
Index	MODIFICATIONS		Date Visa

CLAMP NUT WASHER GASKET BRAID CLAMP CONTACT

FOR REF ONLY

BODY ASSEMBLY SHOWN UNASSEMBLED



STEP 1:
trim outer jacket to dimension shown, do not cut braid

STEP 2:
slide nut washer and gasket over outer jacket, next slide braid clamp until it butts up against outer jacket

STEP 3:
comb braid until all strands are straight, cut braid to dimension shown do not cut dielectric next fold braid back over braid clamp as shown

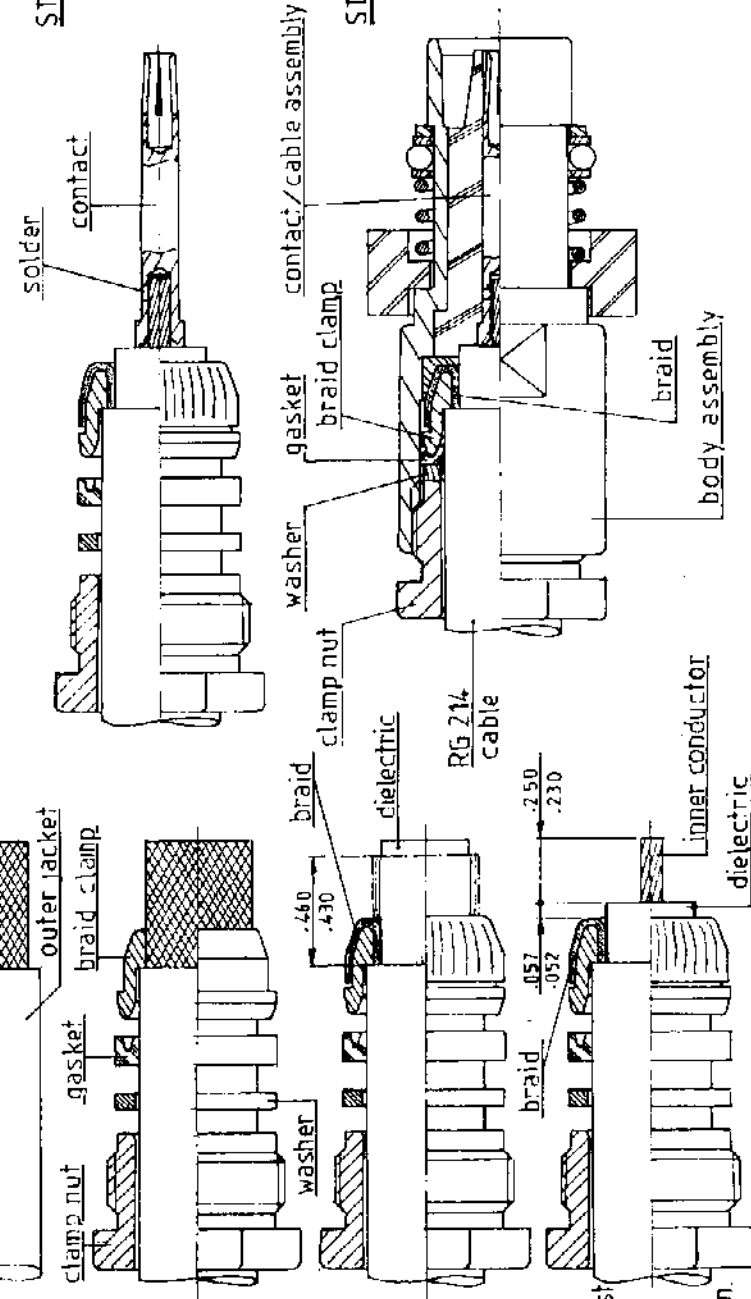
STEP 4:
trim dielectric as shown do not cut inner conductor (for best VSWR match the end of the dielectric should be cut clear and square) trim inner conductor to dimension shown.

STEP 5:

place contact over inner conductor until stops against dielectric solder in place as shown.

STEP 6:

insert contact/cable assembly into body assy slide gasket (make sure gasket is properly seated with sharp edge of braid clamp) and washer into body assy, slide clamp nut in place and tighten using 4.5 to 5.5 inch pounds torque.



IND	MODIFICATIONS	DATE	VISA	IND	MODIFICATIONS	DATE	VISA

CE DOCUMENT EST LA PROPRIETE DE LA STE SOGIE. IL NE PEUT ETRE REPRODUIT. NI COMMUNIQUE A DES TIERS SANS AUTORISATION ECRITE.	
marque	RABIAL
travailleur	DES. LE 14 10 85
NOM	ZEBER
VERIF. LE	
NOM	
ECH.	